

**Description and application**

Displacement flow diffuser NW-4p are used in industrial facilities or public utility, in places where there is a need to bring a large amount of fresh air with low velocity in the occupied zone. These diffusers can be freestanding or mounted at the wall or installed in the wall niche.

Displacement flow diffuser has Hygienic Certificate HK/K/0522/02/2016

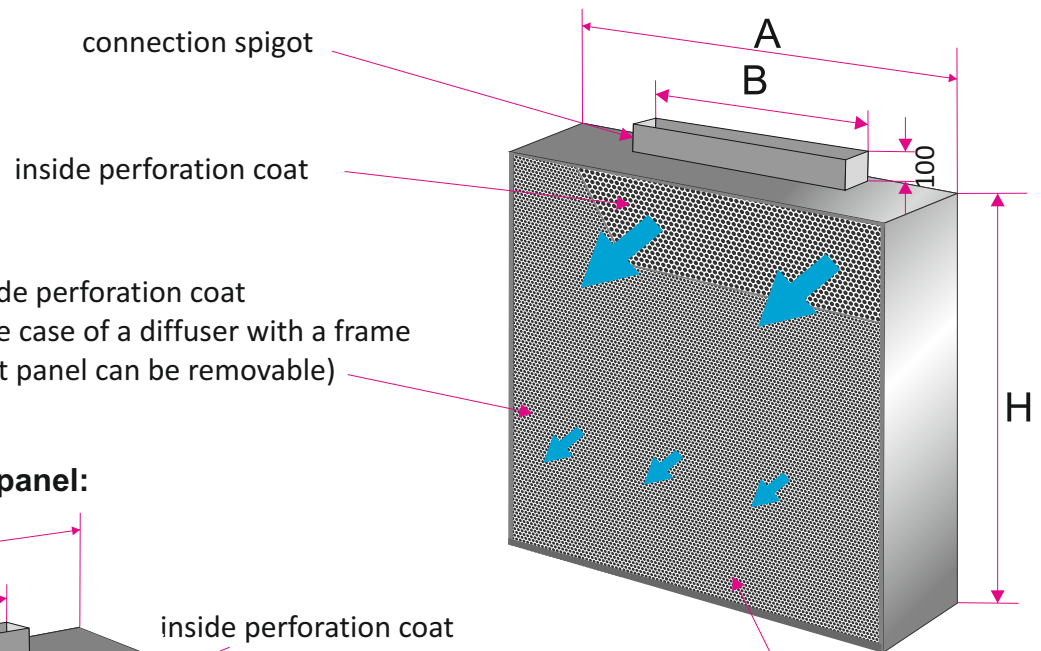
**Description and application**

Diffusers are made of two coats perforated sheet (internal and external) of different clearance. Diffusers can be fitted with rectangular or rounded intake spigots, for connection to matching rectangular or round duct. Rectangular body can be mounted on the base in the form of a plinth - option for free standing version. Diffuser with disassembled front panel with external frame allows to fit it into the wall niche and mask the gap between the wall and the diffuser. Diffusers in standard are made of galvanized powder coated steel. Also available in stainless steel / acid-resistant or powder-coated aluminum.

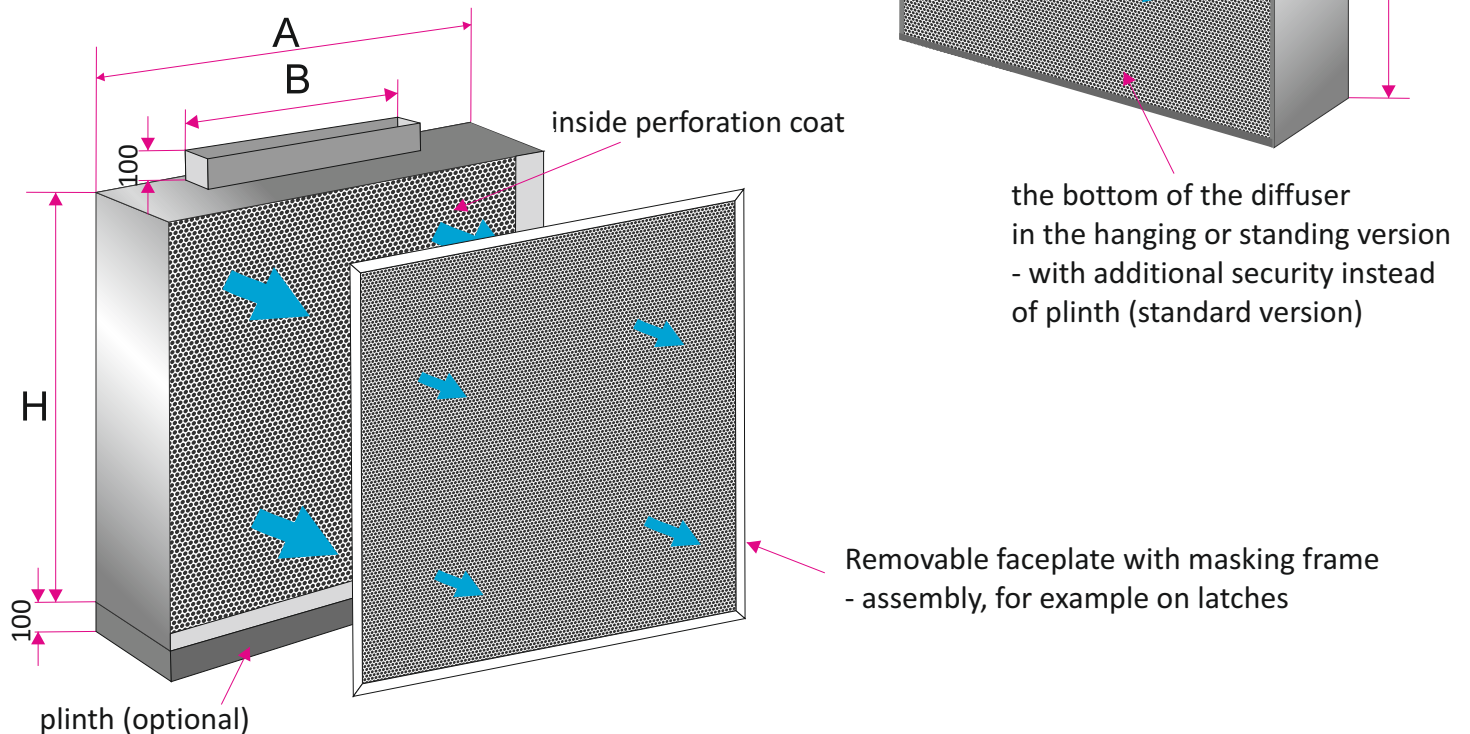
**Construction**

At customer's request the dimensions can be changed diffuser, after discussing the technical possibilities.

**Diffuser with two coats perforated sheets permanently mounted:**



**Diffuser with removable front panel:**

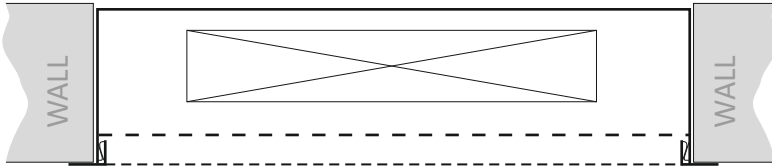


Ways of execution

Displacement diffusers NW-4p are mounted in the wall and can be made in the free standing version or parietal version. Depending on the method and location of the diffuser, the front panel can be disassembled with an enclosing frame (R1) or permanently mounted when there is no need to inspection the diffuser.

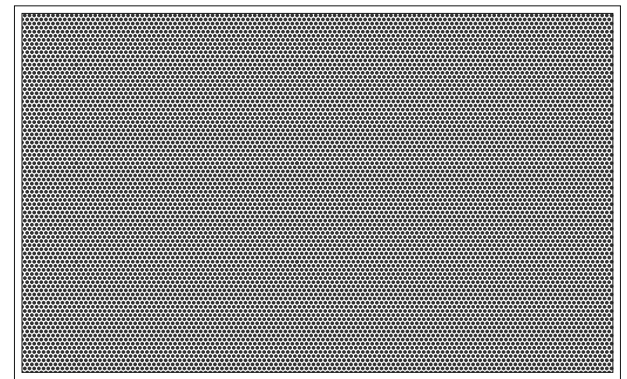
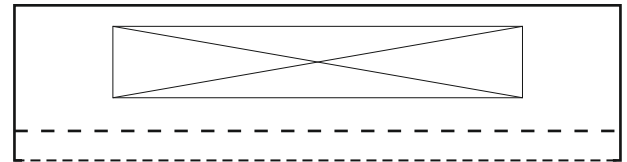
**Frame R1**

Diffuser with frame flanged on a wall  
(option to remove the front panel)



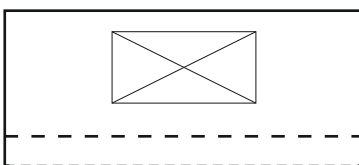
**Frame R2**

Diffuser leveled against the wall

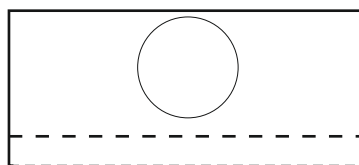


**Types and location of connection spigots**

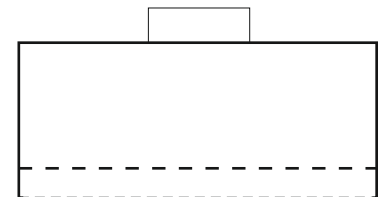
rectangular top spigot



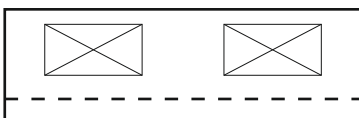
upper round spigot



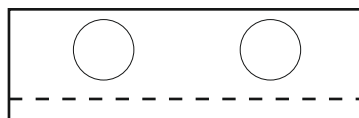
back round spigot



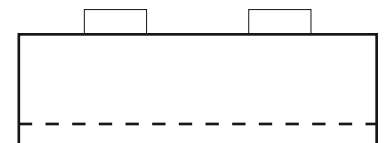
2x rectangular top spigot



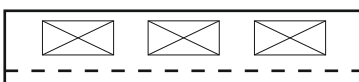
2x upper round spigot



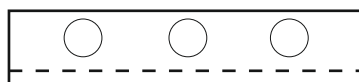
2x back round spigot



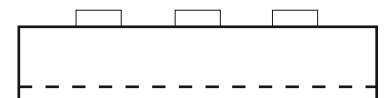
3x rectangular top spigot



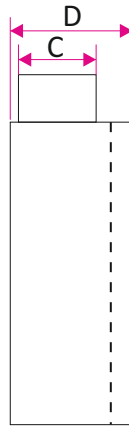
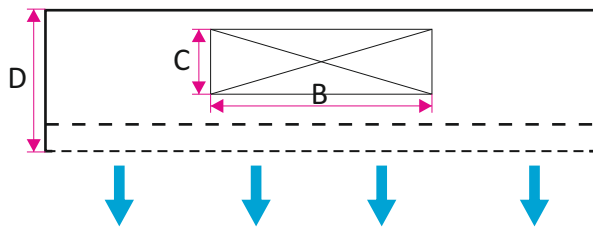
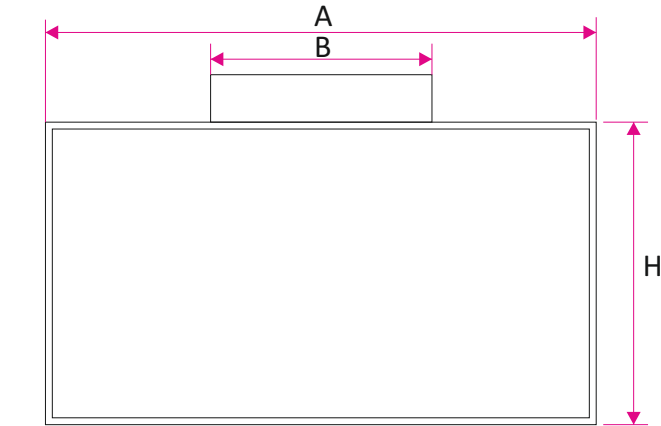
3x upper round spigot



3x back round spigot



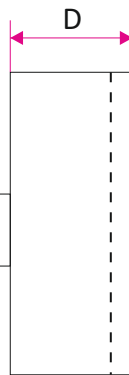
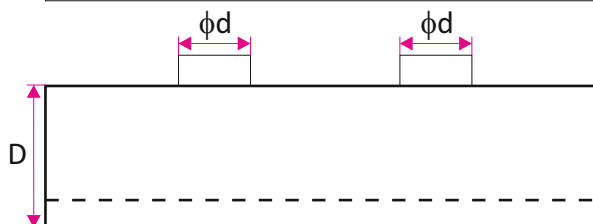
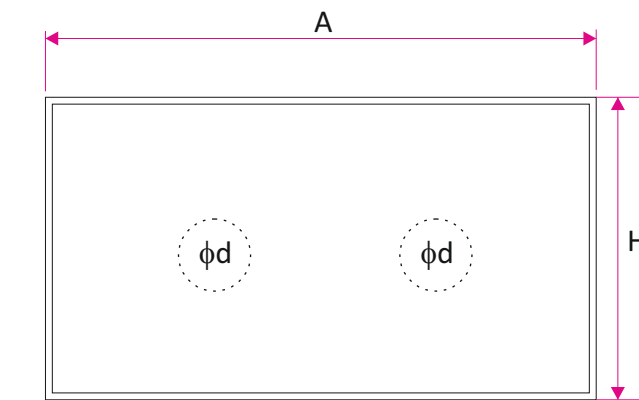
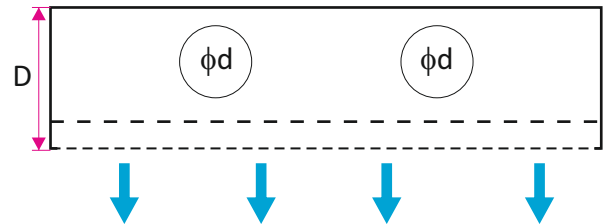
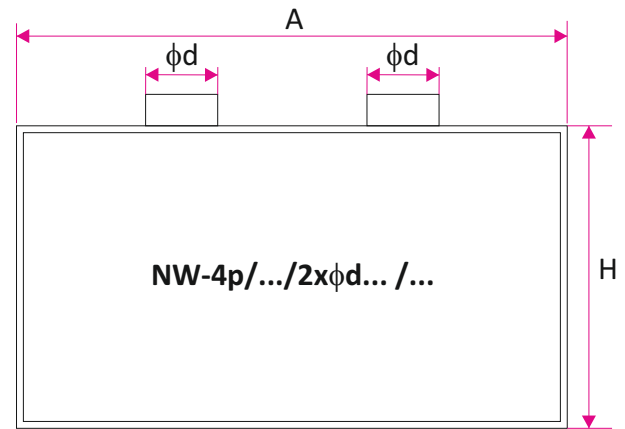
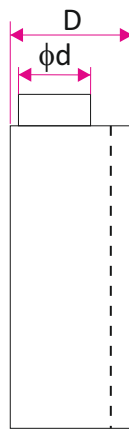
Ways of execution



- wall mounting (frame R1) or parietal (frame R2)
- directional airflow 1-, 2- or 3-ways
- perforated front plate and inside perforated sheet coat provide airflow with low turbulence and low speed
- galvanized steel, aluminum or stainless steel
- rectangular connection spigot
- available with base (plinth)



- wall mounting (frame R1) or parietal (frame R2)
- directional airflow 1-, 2- or 3-ways
- perforated front plate and inside perforated sheet coat provide airflow with low turbulence and low speed
- galvanized steel, aluminum or stainless steel
- round connection spigot (number of spigots adjusted to the size of diffuser)
- available with base (plinth)



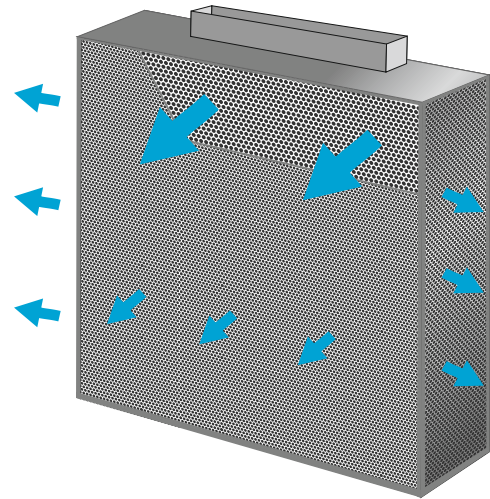
- wall mounting (frame R1) or parietal (frame R2)
- directional airflow 1-, 2- or 3-ways
- perforated front plate and inside perforated sheet coat provide airflow with low turbulence and low speed
- galvanized steel, aluminum or stainless steel
- back round connection spigot (number of spigots adjusted to the size of diffuser)
- available with base (plinth)



## Ways of execution

### Diffuser NW-4p with directional airflow 2- or 3- ways

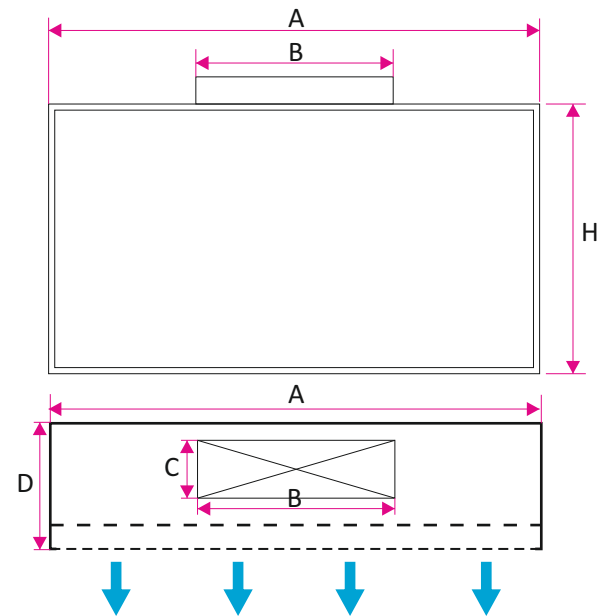
- mounting parietal (frame R2) or free standing
- directional airflow 1-, 2- or 3-ways
- perforated front plate and inside perforated sheet coat provide airflow with low turbulence and low speed
- galvanized steel, aluminum or stainless steel
- rectangular connection spigot
- available with base (plinth)



### Example of dimensions

All dimensions of diffuser on customer request.

Size of spigot	A [mm]	H [mm]	B [mm]	C [mm]	D [mm]
200x600	1200	2000	600	200	300
250x800	1200	2000	800	250	350



### The method of placing an order

Please make orders according to the following formula:

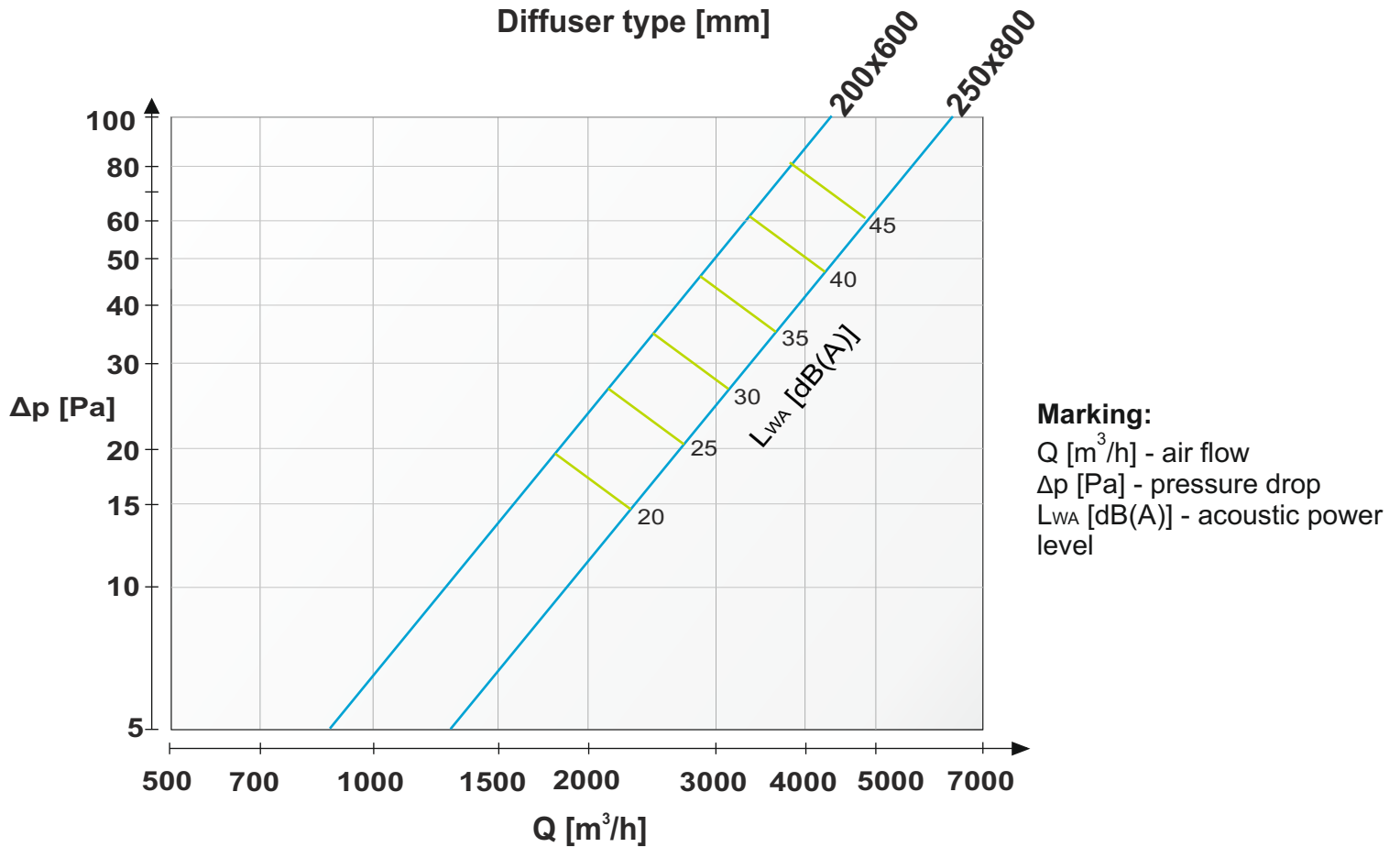
**NW-4p/ 'AxH' / 'D' / 'BxC' / 'R' / 'K' / 'N' / 'RAL' / 'M' / 'C'**

- 'AxH' - external dimension - for example **1200x2000**
- 'D' - diffuser depth \*
- 'BxC' - number of spigots and dimension - for example **2xφ200 / 2x 600x200**
- 'R' - type of frame (diffuser location)
  - R1** - diffuser with frame - version for mounting in wall
  - R2** - diffuser without frame - free standing/ parietal version
- 'K' - the position of the connection spigot:
  - G** - top \*
  - T** - back
- 'N' - direction of airflow **1-, 2-, 3-way**
- 'RAL' - diffuser color according to RAL palette
- 'M' - material:
  - OC** - galvanized steel\*
  - AL** - aluminum
  - KO** - stainless steel (type 1.4301 or 1.4404)
- 'C' - accessories
  - none** \*
  - C** - base (plinth)

\* - If you don't give the information will be used standard parameters.

Technical data

Pressure drop ( $\Delta p$ ) and acoustic power level ( $L_{WA}$ ) depending on the air volume flow ( $Q$ )



**EXAMPLE:**

- air volume flow  $Q=2500 m^3/h$
- diffuser spigot 200x600 [mm]

**Reading from the graph:**

- pressure drop  $\Delta p=35 Pa$
- acoustic power  $L_{WA}=30 dB$

