

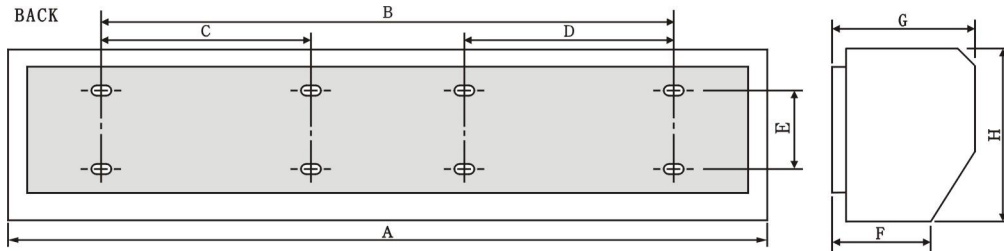
AIR CURTAIN INSTALLATION MANUAL

**Thanks for purchasing this Air Curtain,
Please read these instructions carefully before use.**

1、PRODUCT INTRODUCTION

As one of the new top-class products for modern decoration, air curtain is also matched with the air conditioner. And it is installed at the entrances of supermarket, theater, meeting room, hotel, office room, working shop and storeroom to prevent the dust, mosquito and nocuous air, and so on.

2、IDENTIFICATION & INSTALLATION DIMENSIONS

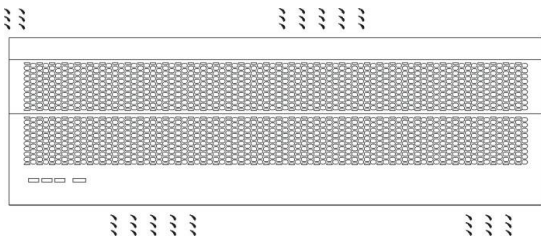


MODEL	A	B	C	D	E	F	G	H
HEAT1-E-90-1PH HEAT1-E-90-3PH	900	440	---	---	90	105	195	265
HEAT1-E-100-1PH HEAT1-E-100-3PH	1000		---	---				
HEAT1-E-120-1PH HEAT1-E-120-3PH	1200		---	---				
HEAT1-E-150-1PH HEAT1-E-150-3PH	1500	840	---	---				
HEAT1-E-180-1PH HEAT1-E-180-3PH	1800		---	---				
HEAT1-E-200-1PH HEAT1-E-200-3PH	2000		---	---				

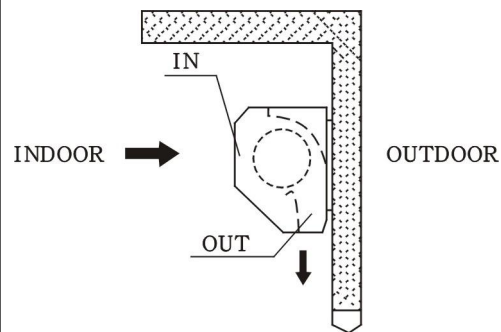
3、INSTALLATION CAUTION

Must follow the following requests when installing air curtain:

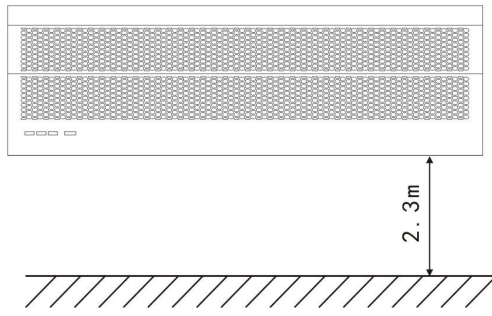
3.1 Please install the unit in a sturdy place to avoid the shaking and ensure its security (because it maybe causes the wall becoming flexible or shaking and noise.



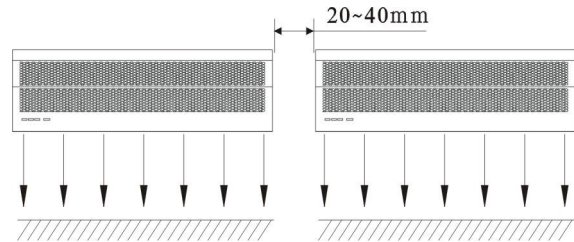
3.2 Please install the unit inside the room.



3.3 Don't install the unit too low, no less than 2.3 meters from the ground.



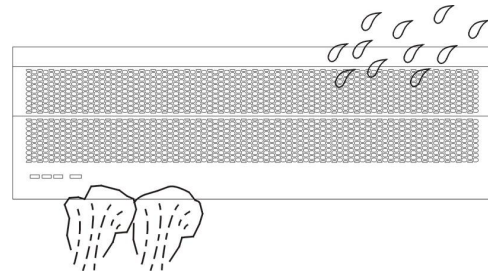
3.4 When the entrance is wider than the unit, it is recommended to install two or more units in parallel. In this case, provide 20-40mm gaps between the units.



3.5 Don't allow gaps between the unit and the wall. When hanging it from the ceiling, using the enclosed ceiling brackets.



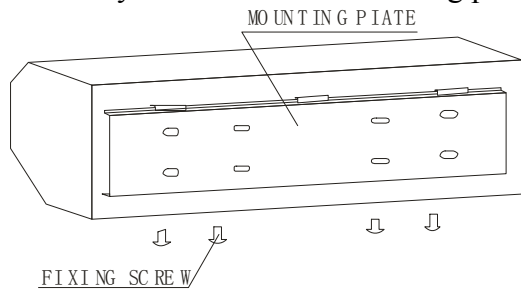
3.6 Don't install the unit in a place where it is splashed by water, exposed to excessive steam, explosive gas or corrosive gas.



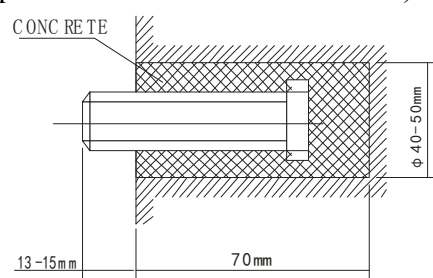
4. INSTALLATION

A. Installing on the concrete wall:

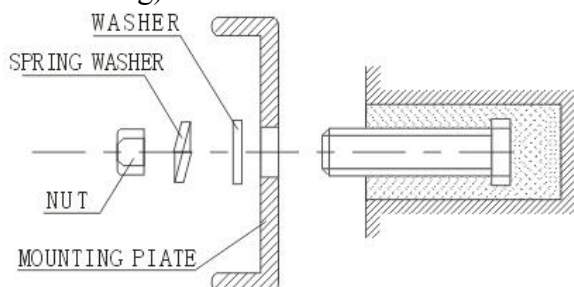
4.1.1 Removed the mounting plate
Unclamping the fixed screws on the back of main body to removed the mounting plate.



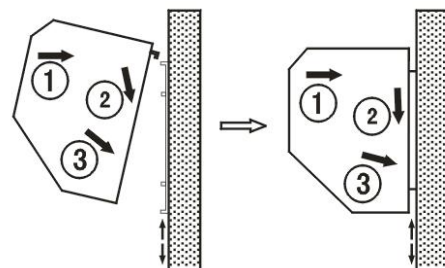
4.1.2 Fix the bolts in the proper position (Fix the position with the mounting plate and pour cement into the bolt holes.)



4.1.3 When the cement has freeze, fit the mounting plate (use the washer and nut according to the following)

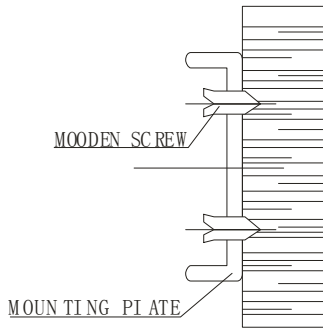


4.1.4 Install the main body
Set the main body onto the upper end of the mounting plate and clamp it as shown.

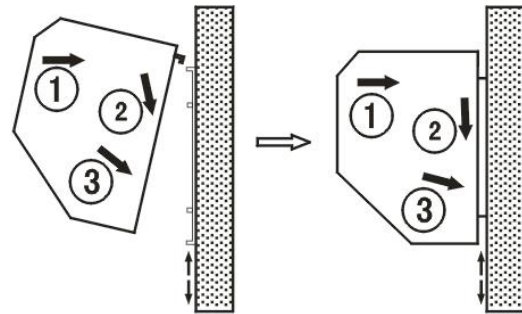


B、 Installing on the wooden wall:

4.2.1 Fix the mounting plate in the proper positions with tapping screw.

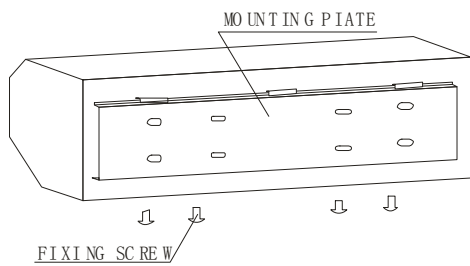


4.2.2 Same as the step 5 of A

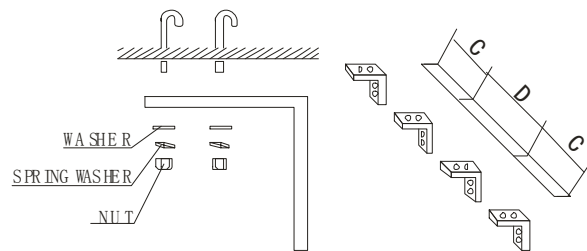


C、 Hanging from the ceiling:

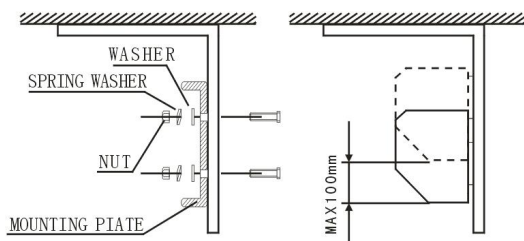
4.3.1 Remove the mounting plate from main body (Same as step 5.1.1)



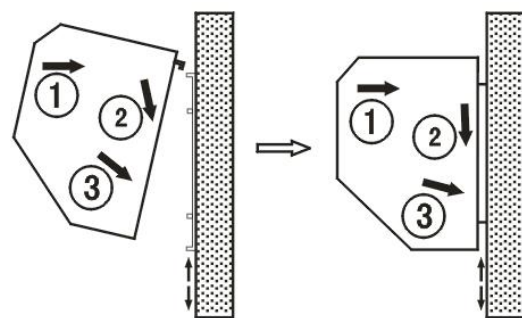
4.3.2 Fixing ceiling brackets as Fig.



4.3.3 Set the mounting plate on the ceiling brackets and ensure safe & fixing (use the bolts attached to the ceiling brackets as Fig. Using the ceiling brackets to hang from the ceiling, the position of mounting plate can be adjusted in the limit of 100mm.



4.3.4 Do the same as step A to install the main body.



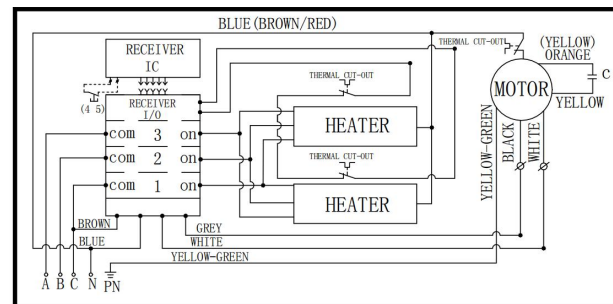
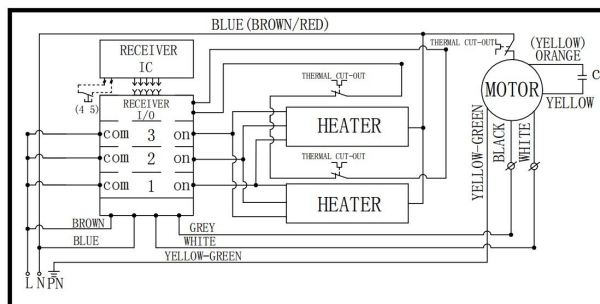
5、 HEATING MODEL TECHNICAL PARAMETER

MODEL	Diam. Of Wheel (mm)	Voltage /Freq. (V~/Hz)	Motor Power (W)	Heater power (KW)			Temp. (K)	Max.air speed (m/s)	Air volume (m³/h)	Noise (dB)	Net weight (Kg)
				I	II	III					
HEAT1-E-90-3PH	115	380/50	160	2	4	6	35-45	8.5	1000	55-57	14.5
HEAT1-E-100-3PH			180	2	4	6			1200	55-57	15.5
HEAT1-E-120-3PH			200	2.7	5.3	8			1500	56-58	17
HEAT1-E-150-3PH			230	3.3	6.7	10			1900	57-59	20.5
HEAT1-E-180-3PH			300	4	8	12			2400	58-60	24
HEAT1-E-200-3PH			350	4.6	9.4	14			2800	59-61	26
HEAT1-E-90-1PH	115	220/50	160	2	4	6	35-45	8.5	1000	55-57	14.5
HEAT1-E-100-1PH			180	2	4	6			1200	55-57	15.5
HEAT1-E-120-1PH			200	2.7	5.3	8			1500	56-58	17
HEAT1-E-150-1PH			230	3.3	6.7	10			1900	57-59	20.5
HEAT1-E-180-1PH			300	4	8	12			2400	58-60	24
HEAT1-E-200-1PH			350	4.6	9.4	14			2800	59-61	26

LINE SIZE

POWER ITEM	SINGLE PHASE (220V~, MAIN LINE:L、N)							THREE PHASES (380V~ MAIN LINE:A、B、C、N)						
	HEATER POWER (KW)	3	4	5	6	8	10	14	3	4	5	6	8	10
MAIN LINE (mm²)	1.5	2.5	2.5	4.0	6.0	10	10	1.0	1.0	1.0	1.5	2.5	2.5	4.0
EARTH LINE (mm²)	0.75	1.0	1.0	1.5	2.5	2.5	4.0	0.75	0.75	0.75	0.75	1.0	1.0	2.5

NOTE: forbid to overload operation for a long time!



6、 OPERATION

6.1. Controlled by remote controller

- Press “ON/OFF” button to turn ON the unit. Main receiver receives the signal with the sound of “beep” to start working with the green light in cool mode at high speed “H”. Press “ON/OFF” button again to turn OFF.
- When the unit is working at the above a. situation, press “COOL” button in the Remote controller, receiver receives the signal with the sound of “beep” and switch high speed to low speed “L”. Meanwhile there is a green light display in the receiver. Press “COOL” button again, the unit will switch low speed to high speed. So when the unit is working at cool mode, press “COOL” button can switch air curtain working under the cycle of Low or High speed.
- FOR SINGLE PHASE UNIT:** When the unit is working at the above b. situation, press “HEAT” in the remote controller, receiver receives the signal with the sound of “beep” and switch cool mode to heating mode at low power. Meanwhile there is a Red light display in the receiver. Press “HEAT” button again, the unit will switch low

power to high power. Meanwhile there is TWO Red lights display in the receiver. Press “HEAT” button again, the unit will switch heating mode to cool mode and the red lights display change to green light in the receiver. So when the unit is working at cool mode, press “HEAT” button can switch air curtain working under the cycle of heating low power, heating high power or cool mode.

FOR THREE PHASES UNIT: When the unit is working at the above b. situation, press “HEAT” in the remote controller, receiver receives the signal with the sound of “beep” and switch cool mode to heating mode at low power. Meanwhile there is a Red light display in the receiver. Press “HEAT” button again, the unit will switch low power to middle power. Meanwhile there is TWO Red lights display in the receiver. Press “HEAT” button again, the unit will switch middle power to high power. Meanwhile there is THREE Red lights display in the receiver. Press “HEAT” button again, the unit will switch heating mode to cool mode and the red lights display change to green light in the receiver. So FOR THREE PHASES MODEL when the unit is working at cool mode, press “HEAT” button can switch air curtain working under the cycle of heating low power, heating middle power, heating high power or cool mode.

- d. When the unit works at cool mode, press “ON/OFF” button to turn OFF the unit.
- e. When the unit works at heating mode, press “ON/OFF” button, receiver receives the signal with the sound of “beep” and switch to cool mode at high speed, the indication light turns to green flicker light. The unit will continue to work in cool mode for 3 minutes and then stop. (This is to ensure the heater is been cooled down and has 3 minutes delay stop).

6.2. Controlled by the control panel in the unit is the same function as 7.1.

6.3. Overheat protection:

When the air curtain works at heating mode, there is overheat protection. When the heater temperature is overheating, heating mode will stop and switch to cool mode automatic, at the same time the indication light change to green light. When the temperature drop down to a certain temperature, if want the unit to work at heating mode, press “HEAT” button to continue to work heating mode.

7、 CAUTIONS

- 1)、 Turn off the interrupter or disconnect the plug for any maintenance service.
- 2)、 Turn off the interrupter or disconnect the plug in case of a non product use.
- 3)、 Make sure that the product provides a ground wire.
- 4)、 The pictures shown on this manual are illustrative only.
- 5)、 This appliance is not intended for use by persons (including children) with reduced physical, sensory or mental capabilities, or lack of experience and knowledge, unless they have been given supervision or instruction concerning use of the appliance by a person responsible for their safety.
- 6)、 Children should be supervised to ensure that they do not play with the appliance.
- 7)、 If the supply cord is damaged, it must be replaced by the manufacturer, its service agent or similarly qualified persons in order to avoid a hazard.

8、 ATTENTION

- a)、 Use the unit at the rated voltage and frequency indicated on the nameplate.
- b)、 Do not wet the product electrical components.
- c)、 Never use petrol, benzene, thinners or any other such chemical to clean the unit.
- d)、 Routine maintenance must be done every year.

