



KING

**CAST IRON AND STAINLESS STEEL
AIRTIGHT GAS CONVECTORS**

**RISCALDAMENTO
AD ARIA CALDA**

**TECNOLOGIA
ED INNOVAZIONE**

**BALANCED FLOW AND
FORCED FLOW**

KING: CAST IRON GAS FIRED RADIATORS FROM 2 TO 5.3 KW

Systema S.p.A presents its range of KING gas fired radiators, with forced and balanced flow, which represents an affordable alternative to conventional heating in use until now.

10 years guarantee
on combustion chamber and burner

The combustion takes place in a airtight heat exchanger; the air needed for the combustion is taken from outside, by a specific pipe, and products of combustion are evacuated through a coaxial pipe.

It is realized in 18 versions, satisfying all potency, installation and dimensioning requests. On the forced models the pipes can be 5 meter long, with coaxial discharge and with right or left lateral discharge. The ventilated version can have 2 speeds or turned off with convective exchange. The forced models are complete with tank.

The King from 2 kW to 5.3 kW are made by cast iron, the most suitable, valuable and reliable material for the realization of the exchanger of these thermo-convectors as it is noiseless and gives a guarantee of duration (more than 10 years) and a high combustion efficiency.

It is stylish, refined and distinguishable thanks to its pleasant and functional rounded esthetic line, suitable for any type of environment, from modern to rustic. Thanks to its particular and unique upper front slots it guarantees a great comfort in a short time, a better thermal efficiency with heating by convection and radiation, ensuring effective heat distribution without causing the air stratification.

In compliance with UNI-CIG 7129 law devices of type C and B.



CONTROL PANEL

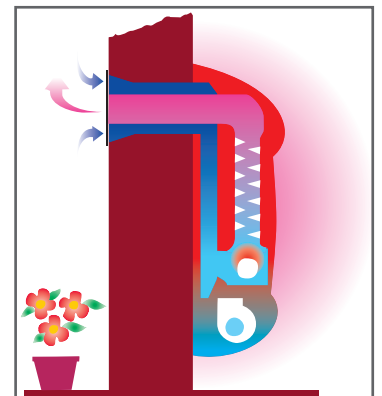


It is safe because the combustion cycle is completely sealed with respect to the environment to heat and the flame is controlled by a thermocouple or an electronic panel, according to the model, which stops the gas flow in case of flame switching off.

It allows greater energy saving in comparison with traditional systems (more or less 30/40%) as the set temperature is reached in a very short time.

As it is an autonomous gas radiator, it is easy and quick to be installed in different places.

COMBUSTION CYCLE



KING: STAINLESS STEEL GAS RADIATORS FROM 7 TO 8,2 KW

The stainless steel King is realized in 2 models from 7,2 kW to 8,2 kW. It is flexible in its applications (wall or ceiling) and the weight is low.

With king radiator you can choose to heat every single environment, programming the hourly and daily temperatures, according to the real needs.

The controls are simple and collected in a single panel, easy to be managed.

The centrifugal fan has 2 speeds.

The king radiator is supplied with exhaust and air intake tubes kit, fixing screws, kit of nozzles for gas change, assembly template, instruction manual and guarantee certificate.

In compliance with UNI-CIG 7129 laws devices of type C.

GARANZIA 10 anni
Su camera di combustione e bruciatore



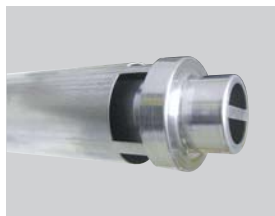
STAINLESS STEEL EXCHANGER



CONTROL PANEL

OTHER APPLICATIONS KIT (OPTIONAL) CAST IRON KING

Installation	Code	Terminal	Models	Description
	02ACKT0700/A	Standard	K21FE - K28FE	LATERAL DISCHARGE KIT for cast iron king for wall installation with lateral coaxial discharge complete of lateral discharge connection, coaxial bend, 0,5 meter stainless steel windproof terminal.
	02ACKT0700/B	Wind proof		
	02ACKT0701/A	Standard	K40FE - K55FE	
	02ACKT0701/B	Wind proof		



STANDARD FOR CAST IRON KING:
STAINLESS STEEL AIR-FUMES WIND PROOF TERMINAL



OPTIONAL FOR STAINLESS STEEL KING:
WALL LEVEL EXTERNAL WIND PROOF AIR-FUMES TERMINAL

CAST IRON AIRTIGHT GAS CONVECTORS FROM 2 TO 5,3KW

PILOT FLAME THERMOCOUPLE SERIES MODELS BALANCED FLOW									
CE CERTIFICATES 0694BN4044 - 0694BN4045		NOT-VENTILATED				VENTILATED			
		K21	K28	K40	K55	K28V	K40V	K55V	
Rated heat flow	kW	2	2,5	4	4,6	2,5	4	4,6	
Working heat output	kW	1,8	2,2	3,5	4,1	2,2	3,6	4,1	
Combustion efficiency *	%	90,0	87,0	87,3	87,5	87,5	88,0	88,0	
Category efficiency		1	1	1	1	1	1	1	
Max fuel consumption (15°C-1013 mbar)	Nat. Gas G20	m³/h	0,21	0,26	0,42	0,49	0,26	0,42	0,49
	Butane G30	kg/h	0,158	0,197	0,315	0,363	0,197	0,315	0,363
	Propane G31	kg/h	0,155	0,194	0,311	0,357	0,194	0,311	0,357
Electrical power supply	V/Hz	--	--	--	--	230/50			
Electrical power (absorbed)	W	--	--	--	--	25	30	30	
Treated ambient air flow	m³/h	--	--	--	--	150	240	270	
Heated ambient volume	m³	36	44	70	82	48	78	88	
Fan speed number		--	--	--	--	2	2	2	
Dimensions	Width	mm	420	420	560	560	420	560	560
	Height	mm	615	615	615	615	615	615	615
	Depth	mm	225	225	225	225	225	225	225
Weight	kg	31	31	45	45	32	46	46	
Gas fitting diameter	inc. (")	3/8"-M							
Air-fume coaxial pipe diameters	Air	mm	120	120	160	160	120	160	160
	Fumes	mm	90	90	90	90	90	90	90
Air-fume max length (Coaxial pipes)	mm	500	500	500	500	500	500	500	
Type of equipment		C11				C11			

ELECTRONIC SERIES MODELS BALANCED FLOW						
NON VENTILATO				VENTILATED		
K21E	K28E	K40E	K55E	K28VE	K40VE	K55VE
2	2,5	4	4,6	2,5	4	4,6
1,8	2,3	3,6	4,1	2,3	3,6	4,1
89,8	90,0	88,0	88,0	90,0	88,0	88,0
1	1	1	1	1	1	1
0,21	0,26	0,42	0,49	0,26	0,42	0,49
0,158	0,197	0,315	0,363	0,197	0,315	0,363
0,155	0,194	0,311	0,357	0,194	0,311	0,357
230/50						
10	10	10	10	37	37	37
--	--	--	--	150	240	240
36	46	72	82	50	78	88
--	--	--	--	2	2	2
420	420	560	560	420	560	560
615	615	615	615	615	615	615
225	225	225	225	225	225	225
32	32	46	46	32	46	46
3/8"-F						
120	120	160	160	120	160	160
90	90	90	90	90	90	90
500	500	500	500	500	500	500
C11				C11		

ELECTRONIC SERIES MODELS FORCED VENTILATED			
FORCED FLOW AND VENTILATION			
K21FE	K28FE	K40FE	K55FE
2,4	3	4,3	5,3
2,2	2,7	3,8	4,6
88,5	88,0	88,3	85,0
1	1	1	1
0,25	0,32	0,46	0,56
0,189	0,237	0,339	0,418
0,186	0,233	0,334	0,412
230/50			
55	55	60	60
150	150	260	260
48	58	84	102
2	2	2	2
560	560	730	730
615	615	615	615
225	225	225	225
33	33	52	52
3/8"-F			
60	60	60	60
38	38	38	38
5000	5000	5000	3000
C13			

* Standard conditions

STAINLESS STEEL GAS FIRED CONVECTORS FROM 7 TO 8,2KW

KING WITH STAINLESS STEEL HEAT EXCHANGERS				
CE CERTIFICATE 0694BN4046		FORCED/ELECTRONIC FLOW		
		K70FE	K90FE	
RATED HEAT FLOW	kW (Hi)	7,2	8,2	
WORKING HEAT OUTPUT	kW (Hi)	6,8	7,7	
COMBUSTION EFFICIENCY *	%	93,7	93,3	
CATEGORY EFFICIENCY		1	1	
MAX FUEL CONSUMPTION (0°C-1013 mbar)	Natural Gas G20	m³/h	0,76	0,87
	LPG Butane G30	kg/h	0,568	0,647
	LPG Propane G31	kg/h	0,559	0,637
ELECTRICAL POWER SUPPLY	V	230		
	Hz	50		
ELECTRICAL POWER (absorbed)	W	85	85	
TREATED AMBIENT AIR FLOW	m³/h	470	470	
HEATED AMBIENT VOLUME	m³	154	174	
FAN SPEED NUMBER		2	2	
OVERALL DIMENSIONS	Width	mm	880	880
	Height	mm	710	710
	Depth	mm	330	330
WEIGHT	kg	44	44	
GAS FITTING DIAMETER	inc. (")	1/2" F		
AIR-FUME COAXIAL PIPE DIAMETERS	Air	mm	100	100
	Fumes	mm	60	60
AIR-FUME MAX LENGHT (Coaxial pipes)	mm	5000	5000	
TYPE OF EQUIPMENT		C13		

* Standard conditions

NOTES

A series of 15 horizontal gray bars, stacked vertically, intended for writing notes. Each bar is a solid gray rectangle of uniform width and height, with a small gap between each bar.

NOTES

A series of 15 horizontal gray bars, stacked vertically, intended for writing notes. Each bar is a solid, uniform gray color and spans most of the width of the page.

NOTES

A series of 15 horizontal gray bars, stacked vertically, intended for writing notes. Each bar is a solid gray rectangle spanning most of the page width, with a small gap between each bar.



HEATING COOLING GREEN ENERGY

SYSTEMA S.p.A. Via Antonio Ceccon, 3 - Loreggia C.A.P. 35010 PADOVA - ITALY

Tel. +39.049.9355663 r.a. - export@systema.it

www.systema.it

